



# Sales and Technical Services

Global Recruitment Solutions Delivered Locally





**40,000**  
Placements made



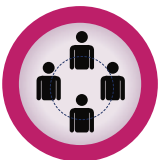
**17,000**  
Job alerts sent daily



**1986**  
Established



**£1bn+**  
Group turnover



**240+**  
Group offices in the UK



**99%**  
Contract KPI performance

## Sales & Technical services

SSR Personnel was established in 1986 and is the leading recruitment provider dedicated to the security, fire engineering and health and safety sectors.

We specialise in the placement of contract, permanent and interim personnel for the fire, security and allied trades in the construction and built environment.

We supply key personnel in sales, design, installation, service and management up to director level.

Our Sales and Technical services division has a track record unrivalled for the delivery of recruitment solutions, operating in the £5 billion European fire and security trade, we also supply recruitment and staffing solutions globally.

As members of the Pertemps family, we have over 4000 members of staff and a network of over 240 group offices. We pride ourselves on our knowledge and expertise within the industry and provide all of our clients with a personalised service to assist you with your recruitment needs from design through sales to project delivery and ongoing maintenance and more.

With a £1bn+ turnover, we utilise our strategic alliances worldwide to pinpoint high calibre individuals through our **Executive Profiles** search brand, which gives us a diverse range of talented candidates.

SSR have managed over 40,000 contract and permanent placements, we have deployed teams of over 100 workers, from technical sales to contracted whole life cycle maintenance staff. Our fire safety engineers have extensive knowledge and experience in fire safety, fire engineering, risk assessment and fire compliance.



## IR35 2021

With the changes to IR35 in 2021 you need to be assured that you are working with a company that will not allow tax avoidance, as the penalties are punitive.

We offer a style of service that you dictate BUT we promise with our thorough recruitment process to offer you candidates that are aligned with the role you require. With over 30 years' experience we have learnt that unless the applicant and vacancy are aligned you have a 75% failure rate in the recruitment process, wasting your time and money.

We do not offer "CV's thrown at a wall and hoping that one sticks" service. We will offer a professional service but that takes both engagement and commitment from all parties. If contingency recruitment is your preference, we understand that you want to keep your sourcing options open, but that needs to be offset against the resources you would like us to deploy on your behalf, so we ask for a period of exclusivity.



## Why SSR Personnel?

SSR® has been voted the Global Security Recruitment Consultancy of the Year. The Award was presented to “the recruitment consultancy that has demonstrated the highest levels of professionalism in dealing with client organisations and potential appointees for security-specific roles across all of the major business sectors”, Judges were unanimous in their praise for the leading position that SSR® holds in such a diverse global sector.

SSR® has a global presence with our most recent office in the UAE joining our established operations in Asia, Africa, Europe, Mexico and the USA. We adhere to quality standard 9001:2008. Our services incorporate talent scanning, retained search, interim hire, permanent and temporary assignments. In 2019 SSR Middle East was recognised as the Best Security Recruitment Company in the region.



Our contract service provides an alternative to the long-term commitment of permanent employment. When hiring your temporary personnel through SSR® you have a guaranteed hourly cost which can be allocated to the individual cost centres. We provide global skills resourcing on tap, for the time when you need that expertise.





## Executive Profiles

Drawing on global resources, we pinpoint high calibre individuals, securing consistently outstanding placements, bringing a unique perspective to the process. As a European market leader in several sectors we have sector specific knowledge, yet our approach is highly successful with a diverse range of global service providers and trading companies. Clients with challenging assignments turn to us with confidence. We manage global salary surveys and shortlisting delivery to guarantee diverse representation for their work forces.

Strategic alliances in Africa, the Americas, Asia, Europe and the Middle East extend our reach to talented candidates worldwide.



The executive search assignment can be revealed or not. All responses or approaches are recorded. Our intention is to develop our long list within 10 working days and then to interview and work with the applicant to understand their motivation in taking the next steps, using competency questionnaires we will probe all aspects of their career. Executive Profiles focuses on the image and the shadow, revealing the complete candidate.

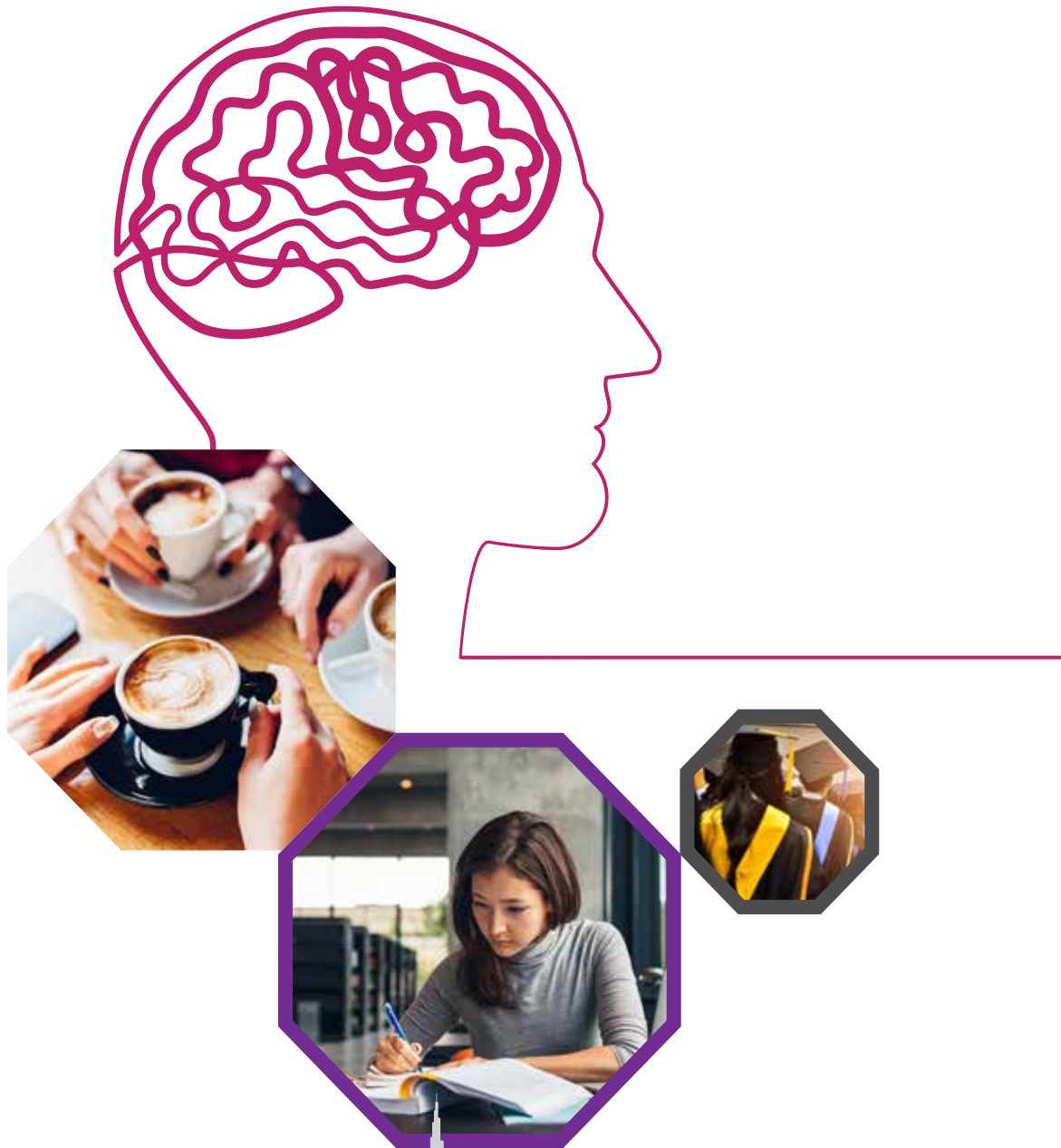
Verification is essential. Candidates make presentations – recorded if required, whilst technical competency interviews reveal depth of business knowledge. Every facet of the candidate, including recent events and professional standing, are closely scrutinised - we are aware of every factor that will influence the decision. Multimedia based presentation of candidates and global interviewing services are available, and when the time comes to discuss the offer, we have considerable experience in salary and contractual negotiations.



Executive Profiles overviews the whole recruitment process, ensuring a positive outcome for all. We handle the change in a partner's career, even helping to find a new home, anything to minimise disruption. Ensuring the placement is rock solid. Taking nothing for granted.

**Your investment is backed up with a 26-week replacement guarantee.**





## Bright Minds Programme

We identify emerging talent that bridges the gap between learning and performance to work in your business. This may be a person that you might wish to consider for a full-time role in the future.

We source and select graduates of high calibre who meet a client's personal specification in both skill and behaviour.

We talk directly to our selected 'Bright Minds', they represent the emerging talent who demonstrate potential through their social engagement and media skills. We determine suitability through formal/informal interviews, people profiling at forums, events and academic engagements, establishing a unique talent pipeline for each client.

We collect data through triangulating data such as interviews, surveys, competency-based questionnaires and personality questionnaires. The combination of multiple methods ensure we have a rounded and complete picture.

Throughout their engagement with you, SSR will undertake their quarter reviews and will be on hand to deal with any issues, including employment performance.





## Types of roles we regularly recruit

### Sales:

Pre-Sales Design Consultant  
Business Development Manager  
Senior BDM  
Account Manager  
Sales Manager  
Sales Director  
Sales Surveyor  
Development Director  
National Account Manager  
Technical Sales Engineer

### Installation:

Project Engineer  
Commissioning Engineer  
Project Manager  
Installation Engineer  
Site Supervisor  
Senior Engineer  
Estimator  
Engineering Manager  
Contracts Manager  
Design Consultant  
Design Engineer  
AutoCAD Designer  
Electricians/ Mates  
Cable Pullers  
Risk Assessors  
I.T Data Specialist

### Service:

Service Director  
Service Manager  
Service Engineer  
Call-out Engineer  
Maintenance Engineer  
Tech Support Engineer  
Head Engineer  
Multi-Disciplined Engineer  
PPM Engineer  
Resident Engineer

### Management:

International Technical Security Manager  
Managing Director  
Technical Security Consultant  
Technical Support Manager  
Operations Manager  
Technical Director  
Bid Manager  
Service Support Director  
Sales & Marketing Director  
Quantity Surveyor  
Health & Safety Advisor





## Just a few of our 5 Star reviews

*SSR provides a first-class service for both clients and candidates alike, treating both with equal value. I first encountered Yasmeen in her role as a facilitator for a high-level forum. It was clear from the outset that she is a consummate with an encyclopaedic knowledge of the security industry. Of equal importance perhaps, is her ability to communicate effectively coupled with her likeability!*

*I have known and worked closely with SSR over the years and rate them extremely highly. Peter's vision is well known in the industry, as is his fortitude and commitment. I have on several occasions sought Yasmeen Stratton's guidance, wise counsel and support. She is rightly recognized as a leader within our sector and is a leading light in the City and beyond. A world class business.*

*Professional, Competent, Trusted. A highly respected and well renowned recruiter in the security industry and beyond, I cannot speak for others but my experience in dealing with them has been nothing less than professional, polite and well received.*

### Contact Details:

+44(0)20 8626 3100

[www.ssr-personnel.com](http://www.ssr-personnel.com)

Eternity House, 21- 24 Hickman Ave, London E4 9GA



*When using recruitment agencies, you run the risk of just becoming another number or being farmed out left, right and centre... but with SSR this isn't the case, they are very meticulous in their approach, very knowledgeable in their field and consistently successful at what they do. In an ever-changing security climate, I think they deserve some credit for adapting their process to the inevitable needs of their clients but remaining true to their candidate base. Wouldn't hesitate to recommend.*

*I have dealt with SSR Personnel for over 20 years, both as an Employer and Candidate, and can thoroughly recommend their services – very knowledgeable about the markets they operate within, and always professional in their approach.*



Part of the Pertemps Network Group

